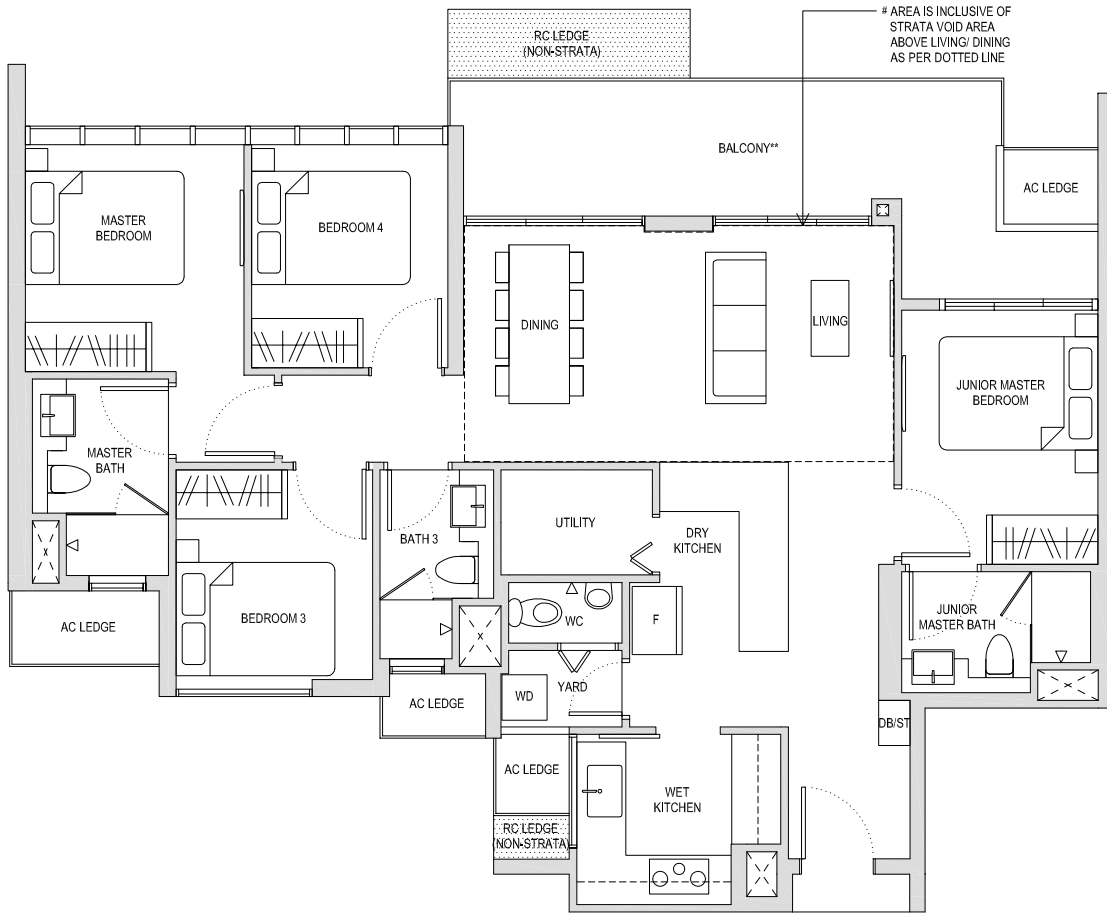


**PENTHOUSE  
4 BEDROOM  
TYPE PH1**

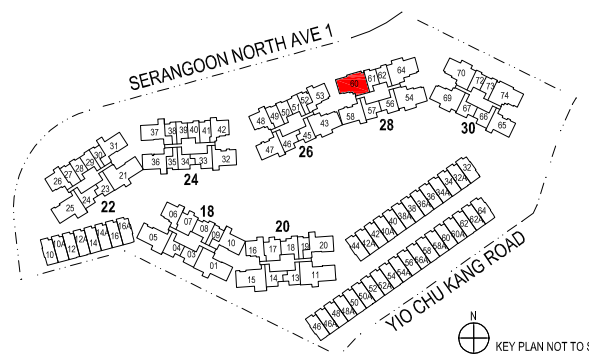
147sqm / 1582sqft \*

BLOCK 28 #14-60



★★ The PES / balcony shall not be enclosed. Only URA approved balcony screens are to be used. For an illustration of the approved balcony screen, please refer to the diagram annexed hereto as "Annexure 1".

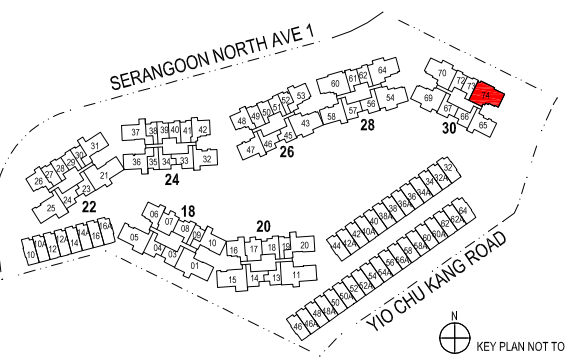
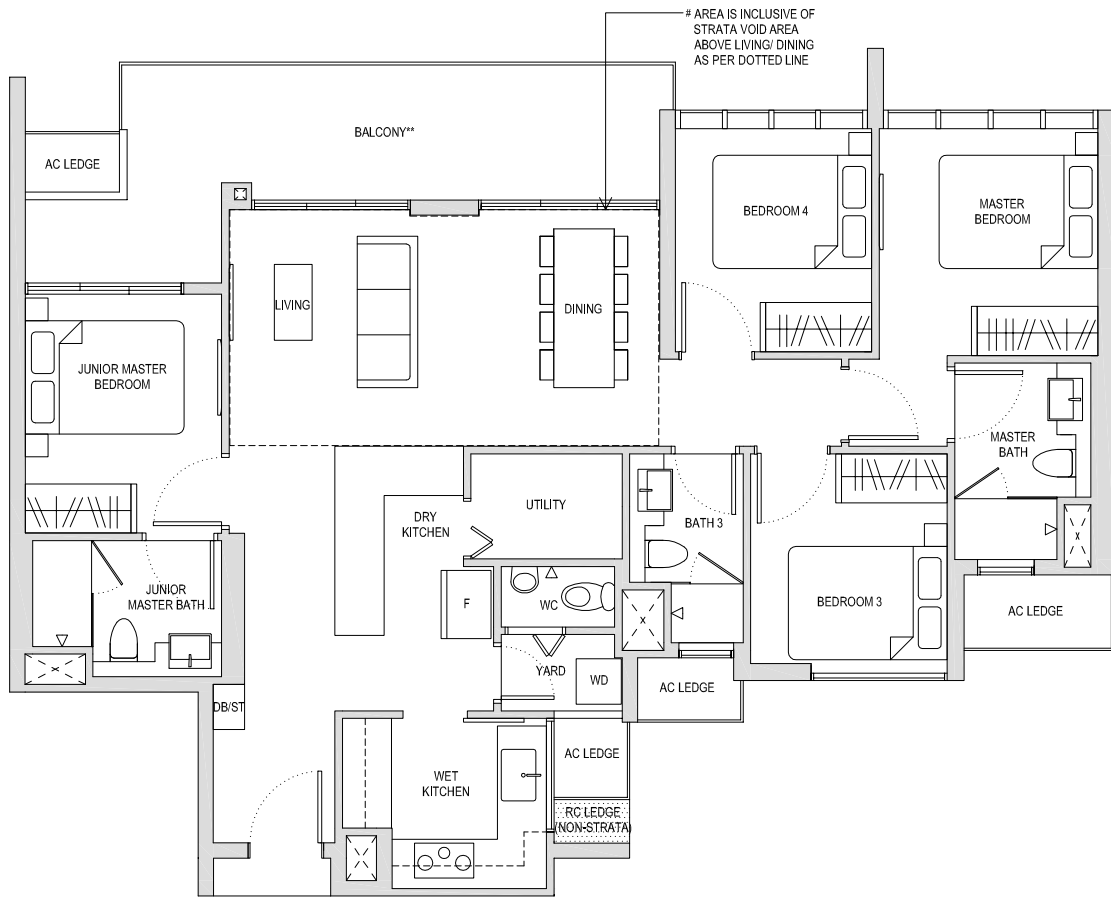
Areas include AC Ledge, Balcony, PES and Strata Void Area (where applicable). Orientations and Facings will differ depending on the unit you are purchasing, please refer to the key plan. Plans are not drawn to scale and subject to change as may be required or approved by the relevant authorities. All areas are estimates only and are subject to final survey.



**PENTHOUSE  
4 BEDROOM  
TYPE PH1**

147sqm / 1582sqft \*

BLOCK 30 #14-74



\*\* The PES / balcony shall not be enclosed. Only URA approved balcony screens are to be used. For an illustration of the approved balcony screen, please refer to the diagram annexed hereto as "Annexure 1".

Areas include AC Ledge, Balcony, PES and Strata Void Area (where applicable). Orientations and Facings will differ depending on the unit you are purchasing, please refer to the key plan. Plans are not drawn to scale and subject to change as may be required or approved by the relevant authorities. All areas are estimates only and are subject to final survey.

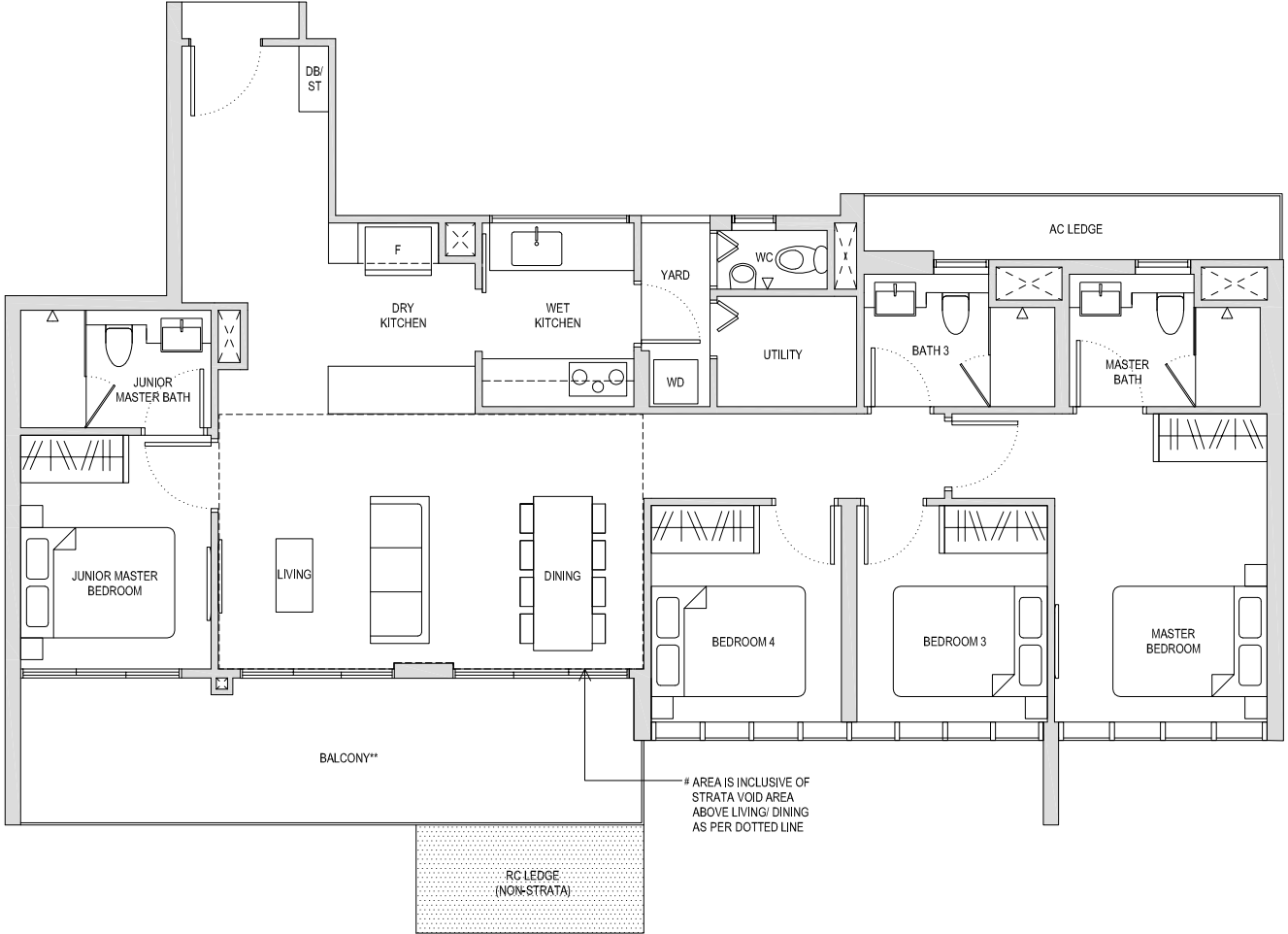
N  
KEY PLAN NOT TO SCALE

Subject to change

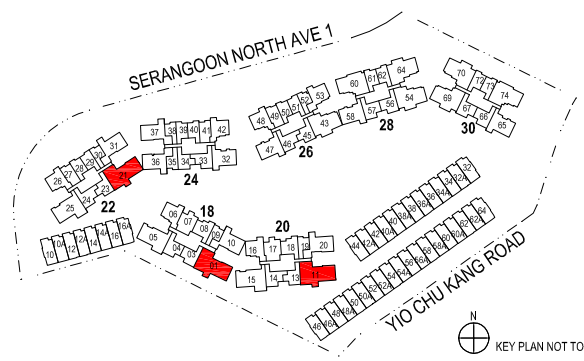
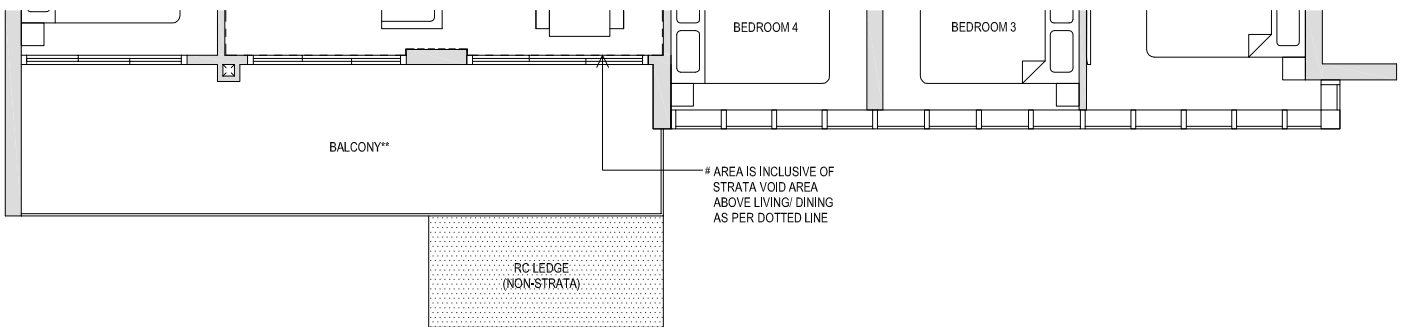
**PENTHOUSE  
4 BEDROOM  
TYPE PH2**

160sqm / 1722sqft \*

BLOCK 18 #14-01  
BLOCK 22 #14-21



**BLOCK 20 #14-11**



★★ The PES / balcony shall not be enclosed. Only URA approved balcony screens are to be used. For an illustration of the approved balcony screen, please refer to the diagram annexed hereto as "Annexure 1".

Areas include AC Ledge, Balcony, PES and Strata Void Area (where applicable). Orientations and Facings will differ depending on the unit you are purchasing, please refer to the key plan. Plans are not drawn to scale and subject to change as may be required or approved by the relevant authorities. All areas are estimates only and are subject to final survey.

KEY PLAN NOT TO SCALE

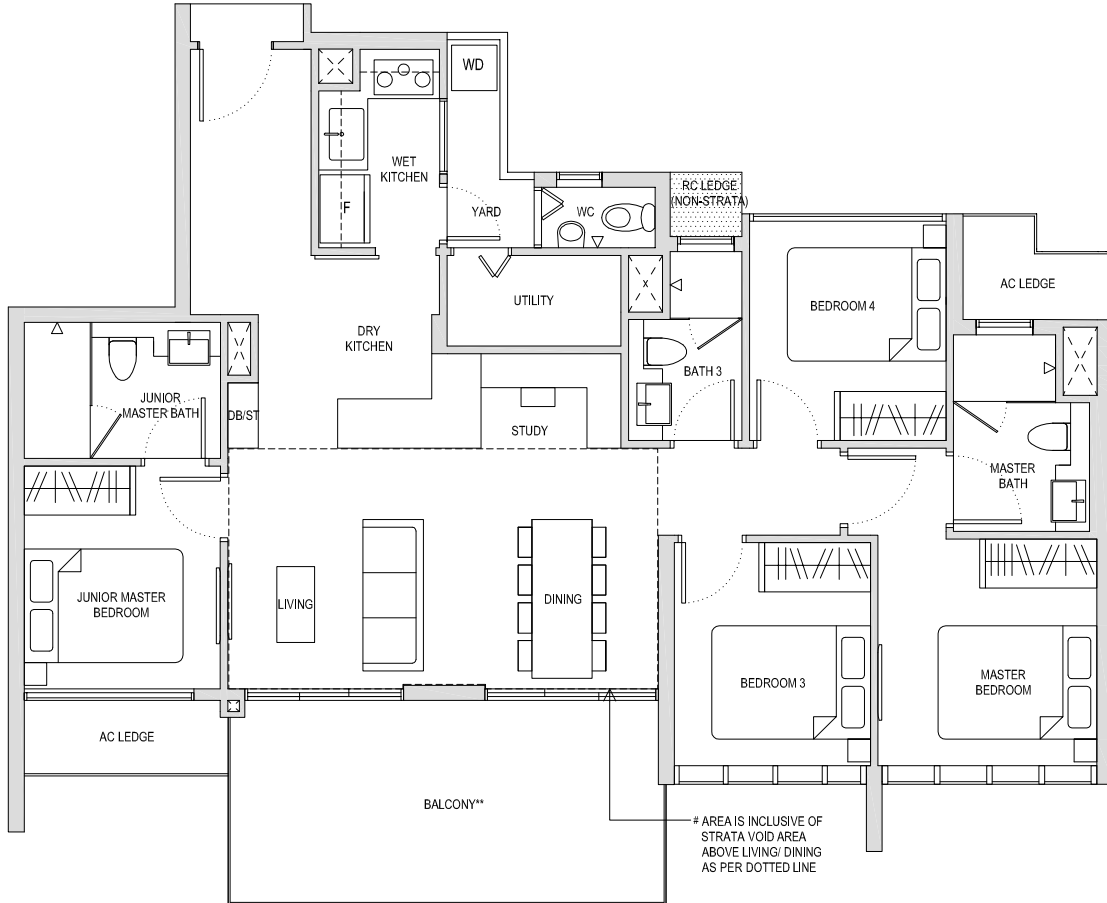
Subject to change

**PENTHOUSE  
4 BEDROOM + STUDY  
TYPE PHS1**

146sqm / 1572sqft \*

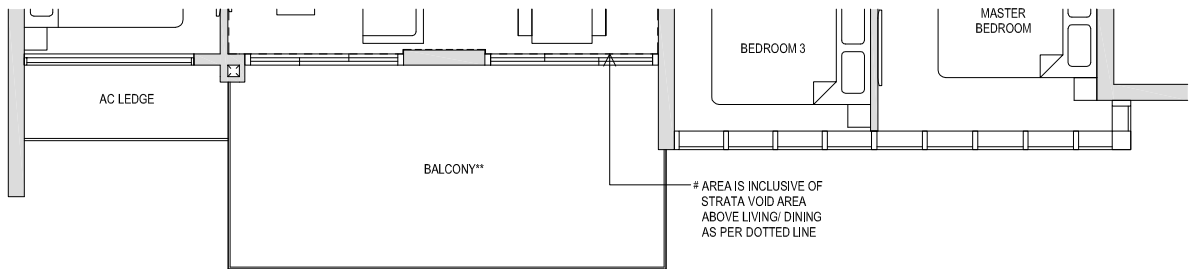
BLOCK 26 #14-43  
BLOCK 30 #14-69\*

\* Mirror image



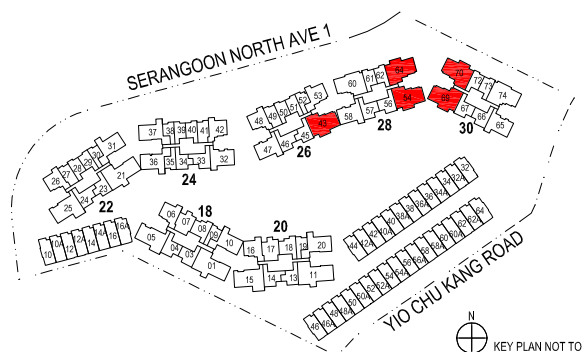
BLOCK 28 #14-54  
BLOCK 28 #14-64\*  
BLOCK 30 #14-70

\* Mirror image



\*\* The PES / balcony shall not be enclosed. Only URA approved balcony screens are to be used. For an illustration of the approved balcony screen, please refer to the diagram annexed hereto as "Annexure 1".

Areas include AC Ledge, Balcony, PES and Strata Void Area (where applicable). Orientations and Facings will differ depending on the unit you are purchasing, please refer to the key plan. Plans are not drawn to scale and subject to change as may be required or approved by the relevant authorities. All areas are estimates only and are subject to final survey.



KEY PLAN NOT TO SCALE

Subject to change